

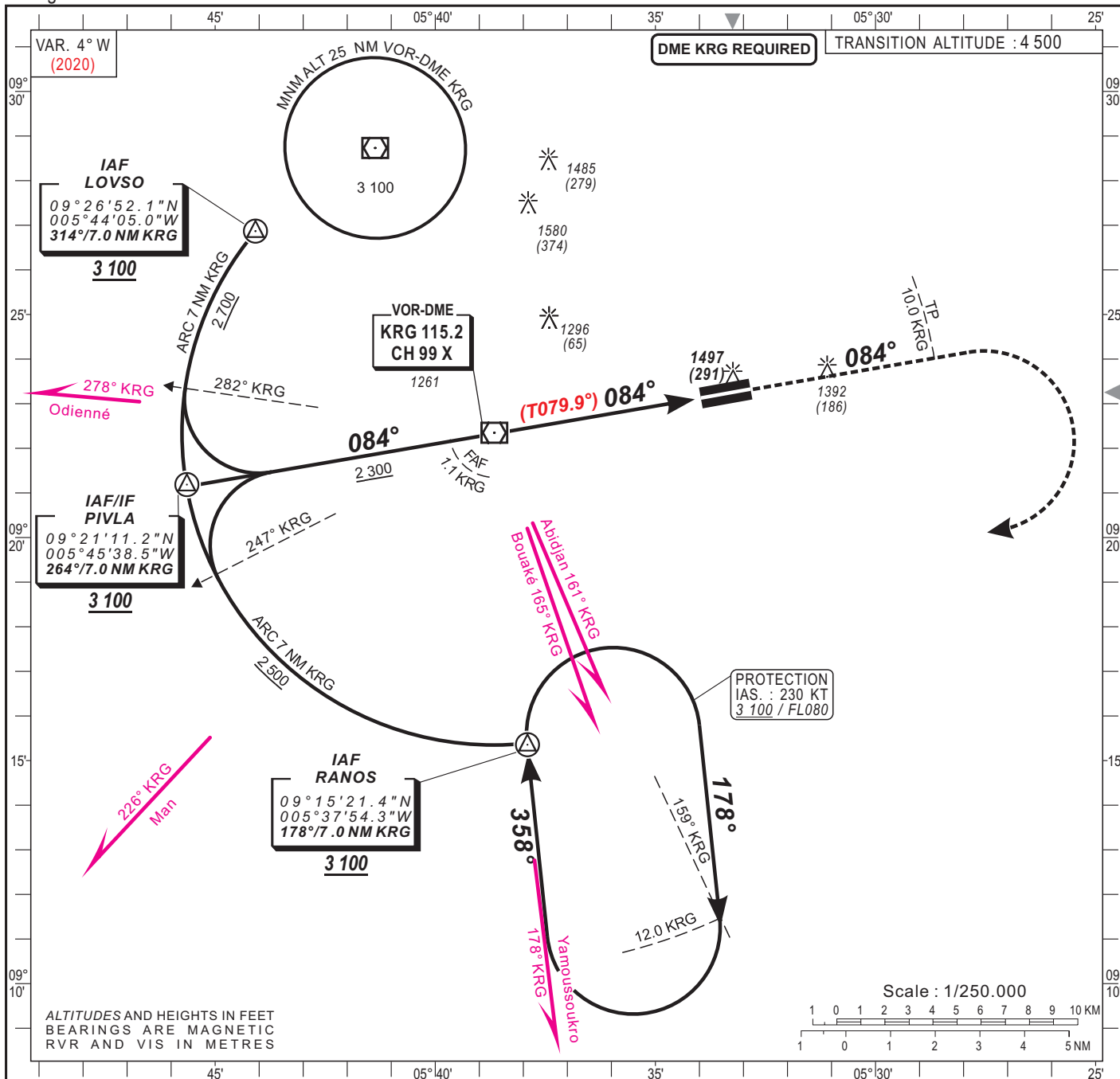
INSTRUMENT
APPROACH CHART
Categories A-B-C

ELEV. : 1 213
THR : 1 206

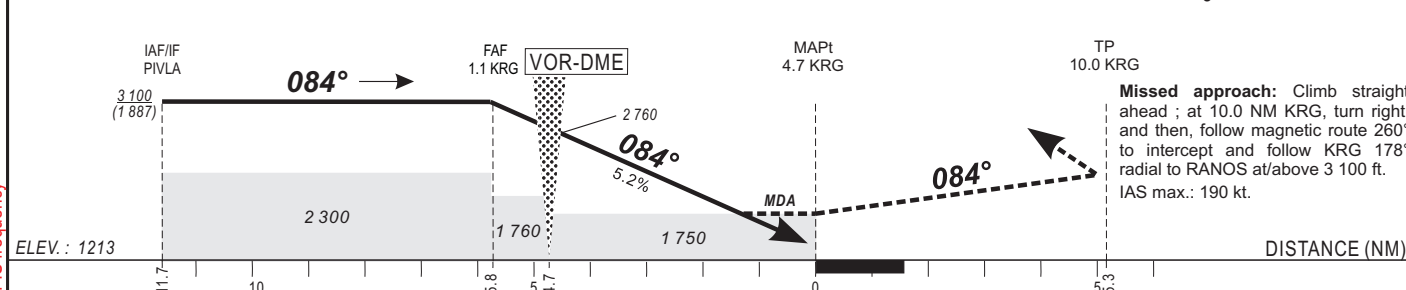
AFIS : 118.2

KORHOGO (DIKO)
VOR Z - RWY 08
IDENT VOR "KRG" 115.2

HEIGHTS RELATED TO AERODROME ELEVATION



Distance DME KRG (NM)	FAF	1	2	3	4	5	6	Notes : Timing not authorized for defining MAPt.
Altitude (ft)	3 100	2 440	2 130	1 810	-	-	-	



CAT	VOR-DME				CIRCLING (1)				RVR for take-off: CATA - B - C : 400			
	OCA (OCH)	MDA	MDH	RVR	OCA (OCH)	MDA	MDH	VIS	Timing FAF / MAPt 5.8 NM			
A	1744 (531)	1750 (540)	1500		1792 (579)	1800 (580)	1500		KT	MIN SEC	KT	MIN SEC
B	1744 (531)	1750 (540)	1500		1792 (579)	1800 (580)	1600		90	3 Min 52	140	2 Min 29
C	1744 (531)	1750 (540)	2000		2160 (947)	2160 (950)	2400		100	3 Min 29	150	2 Min 19
D									110	3 Min 10	160	2 Min 10
									120	2 Min 54	170	
									130	2 Min 41	180	

Notes : - (1) Daytime only - South of the field - OCH and MDH AAL
- Climbing sectors after take-off from RWY09:
= Between radials 229° "KRG" and 096° "KRG".

AMDT 03/22 : Magnetic variation & AFIS frequency